

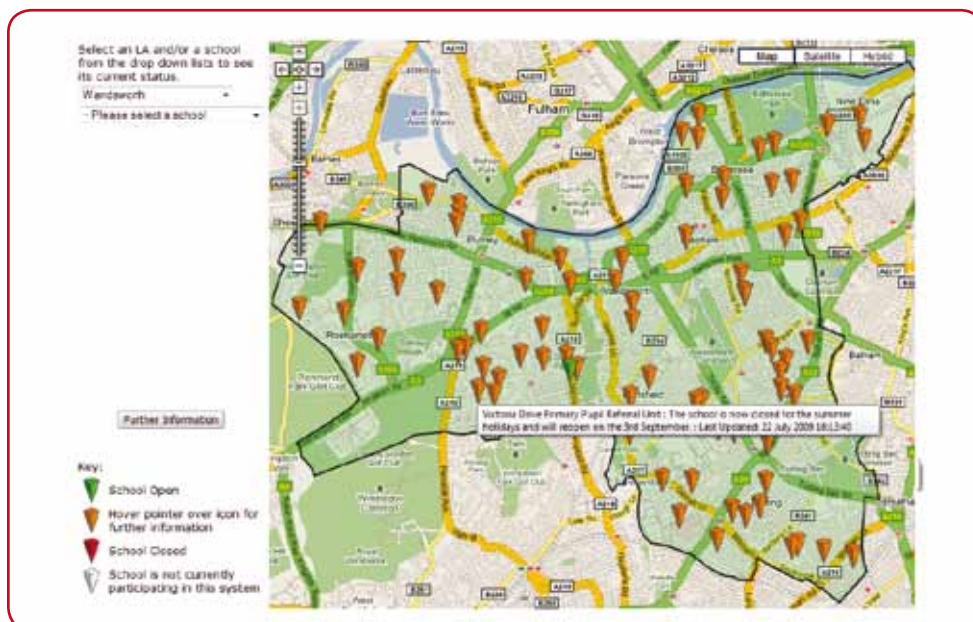
ATOMWIDE

USO-OPENCHECK

In the wake of the disruption and media coverage caused by unplanned school closures in early 2009, when extreme weather conditions struck the UK, Atomwide have developed a new information service for schools within Local Authorities that subscribe to USO.

Key features:

- Easy to use service for providing real-time information about the status of schools
- Invaluable during periods of extreme weather or disease outbreak
- No annual fees or licensing costs
- Data available to end users through a map-based web site or automated telephone line
- Status information can be instantly updated by key staff using the Atomwide support site
- Integration possible between OpenCheck and school or LA web sites, allowing up-to-the-minute data to be included on existing pages



OpenCheck provides parents and pupils with convenient methods for checking whether a school is open, re-opening, or closed on a given date. The status information can be updated by appropriate school or LA staff at any time, thereby ensuring that an up-to-the-minute report is always available.

The primary mechanism for checking a school's status is the OpenCheck web site at <http://map.lgfl.org.uk/opencheck/> which allows the selection of a school by picking options from drop-down lists of LAs and establishments, or just by clicking on the map. Colour-coded icons provide at-a-glance indications of standard states, with further details appearing below the drop-down lists and also next to the user's mouse pointer as it moves over each symbol.

As an alternative, the status of a school can be checked by calling the OpenCheck phone line. An automated system prompts for the unique seven-digit DCSF code of the school being queried, then responds by reading out the appropriate status message and last update time.

For each school, keeping status information up-to-date is easily achieved through the Atomwide support site. Suitably privileged staff users, including the Head Teacher and USO Nominated Contacts, can access a page within the secure area of the site that allows the current message to be changed - either to one of a range of standard options, or alternatively to a completely custom sentence. The date and time of the last update, along with the name of the person making that change, is automatically recorded, and the revised status is made available to end users almost instantly.

Key features:

- Potential to handle general messaging between schools and parents
- Future option to integrate with USO-AutoText (mobile phone text messaging) service

An added bonus with OpenCheck is that the stored status information can be dynamically queried from another web site. In this way, it is possible for a school or LA to embed OpenCheck messages within its own web presence or portal, and so achieve a level of integration whereby status information is displayed on an existing page that is well-known to parents and pupils, while all processing and maintenance is handled by Atomwide's back-end database systems. There are no licensing costs involved when using OpenCheck in this way.

Altogether, OpenCheck offers an easy and efficient solution for advising large numbers of people about the status of schools in an LA. Future developments are expected to add yet more options to the system, and make OpenCheck just as applicable to day-to-day messaging needs as information distribution under exceptional circumstances. In particular, integration with USO-AutoText will introduce the ability to coordinate text messaging between schools and parents or pupils.



All prices exclude VAT. Specifications are subject to change. E&OE. Revision 2

For further information, please contact:

Atomwide Ltd, Unit 2, Ravensquay Business Centre, Cray Avenue,

Orpington, Kent. BR5 4BQ

Tel: 0870 236 5000 • Fax: 0871 236 5000

sales@atomwide.com • www.atomwide.com